

Advent Calendar

HANDBOOK




VALRHONA
Let's imagine the best of chocolate®

VALRHONA WOULD LIKE TO HELP YOU DESIGN YOUR OWN ADVENT CALENDARS THANKS TO OUR COMPREHENSIVE KIT



This guide provides tips on how to label your Advent Calendars. These simple, professional pointers will help you make labels that adhere to European standards. They are not binding by law or regulations. Contact your professional body or union for more details.



Sophisticatedly
designed,
colorful cases

Space on the back to
stick your own labels.

Ready-to-fill
spaces



A handy guide

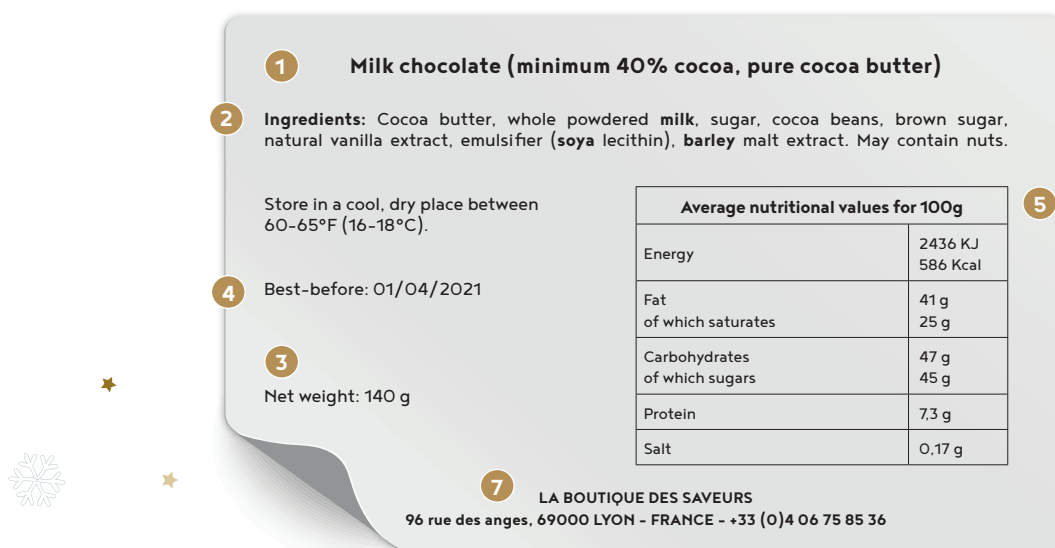


How to use the calendar and special storage instructions

Important: The space for you to fill has not been designed for use with one-shot machines.

Here are our storage recommendations for your Advent Calendars:

- + Once a space has been filled with chocolate, we recommend that **you store your Advent Calendars for a maximum of four months** to avoid any changes to the chocolate's flavor.
- + Once the Advent Calendars have been filled, we recommend that **you keep them closed, flat and at a temperature of 60-65°F (16-18°C)**. We also recommend that you store them away from direct sunlight and humidity.
- + The storage instructions on your labels should display the particular products used in your recipes.



1. LEGAL SALES DESCRIPTION

It is important not to confuse your “legal sales description” (which is legally binding) with your “trade name”.
The legal sales description must appear on your labels.

Exemple :

«Milk chocolate (33% minimum cocoa)» = Legal sales description

«Tanariva» = trade name

2. LIST OF INGREDIENTS

- + **All the ingredients used in food products must appear on your labels.** List them in descending order of weight (measured as they were used in the manufacturing process). It might help you to refer to the list of ingredients for the products you have used.
- + For Valrhona products, this information is available at www.valrhona.com: Log into your account and use the search function to find all Valrhona’s products – From there on you can view product information.
- + Include any other added ingredients in the list according to their weight. We recommend the following Valrhona products for making your Advent Calendars: Valrhona dark and milk couverture chocolates, Dulcey, and Caramélia.
- + **Declare substances and products which might aggravate allergies or intolerances:** These must appear in the ingredient list with a typeface that distinguishes them clearly from the rest of the text. You can view a list of main allergens to declare here: <http://eur-lex.europa.eu/legal-content/EN/TXT/?uri=CELEX%3A32011R1169> (appendix II).
- + **Make sure you clearly state the percentages of any ingredients you highlight** on the label or use in the product name.
- + Only you know what is used in your molded products and the conditions they were made in. If there are potential allergens in the environment where you work, you must note that they “May contain...”.

3. NET WEIGHT

The net weight you should put on your label is the weight of all the chocolate products in your Advent Calendar.
The net weight must be displayed close to the legal sales description.

Note:

The weight of an empty frame for holding the chocolate is 46g, and the weight of an empty box is 53 g.

4. BEST-BEFORE DATES

Your products' best-before date must appear on your labels.

Always put a best-before date preceded by the following:

"Best before [month/year]" for best-before dates which are more than three months away.

"Best before [month/day/year]" for best-before dates which are less than three months away.

It is your job to decide on this date using the best-before dates on the packaging for each of your ingredients.

5. LABELLING FOR NUTRITIONAL VALUES

This labelling has been mandatory since December 14, 2016.

For guidance, take a look at information about all the Valrhona products used - This is available at www.valrhona.com.

6. RECYCLING INFORMATION

Make sure you mention whether your components can be recycled in your local country.

7. NAME / COMPANY NAME AND ADDRESS

You must put your name or company name and your address on your labels.

